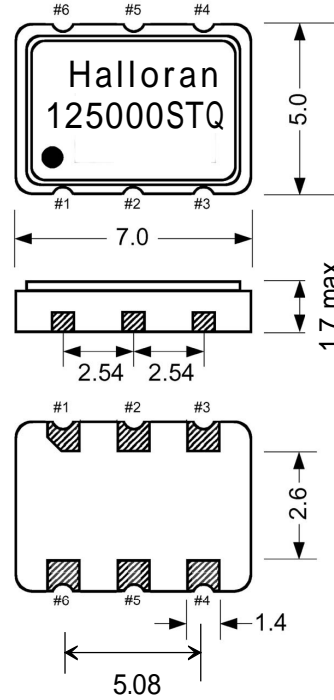


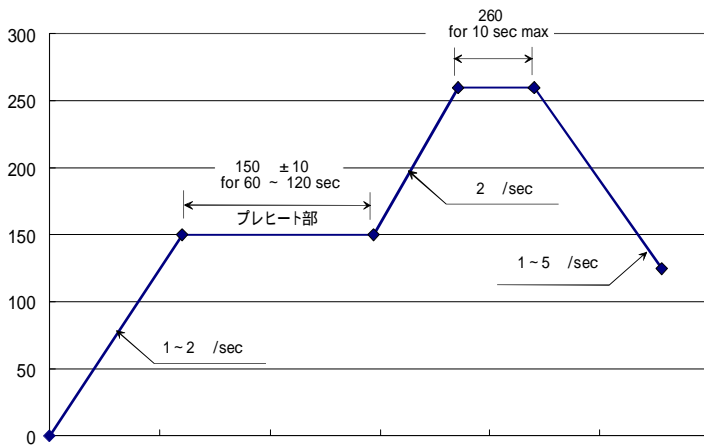
Specification: HE125000STQ		
1	Package	SMD (7 mm x 5 mm x 1.7 mm)
2	Type	SPXO
		(With Tristate)
3	Frequency	125.0000 MHz
4	Stability	±50 ppm max/0 ~ +70
5	Voltage	+2.5 v ± 5 %
6	Current	88 mA max
7	Output Signal	LV-PECL
	V _{OH}	1.55 v Typ. V _{CC} -1.025 ~ V _{CC} -0.74
	V _{OL}	0.8 v Typ. V _{CC} -1.81 ~ V _{CC} -1.405
8	Output load	50
9	Rise and Fall	700 psec max
	Oscillation Start Up Time	10 ms max
10	Symmetry	45% to 55%
11	Jitter	4 ps typ Requested (TBD: サンプル評価後に報告します。)
	Note:	RoHS Compliant



外形寸法 Dimensions

接続端子

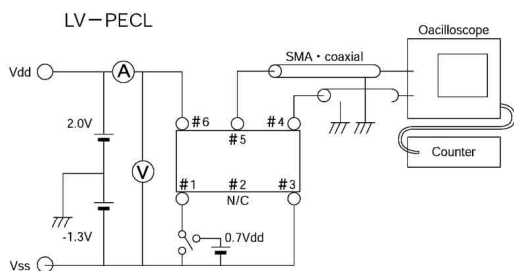
Pin Connections	
	En/Disable
	NC
	V _{ss}
	Output
	Output
	V _{dd}



Enable-disable

input pin #1	output pin #4 #5
70 % V _{CC} min or open	RF-signal
30 % V _{CC} max or GND	HI-Z
Output Enable Time: 2 ms max Disable Time: 200 ns max	

Test Circuit



Output Waveform

